

ETSI EN 300 392-10-18 V1.2.1 (2002-09)

European Standard (Telecommunications series)

**Terrestrial Trunked Radio (TETRA);
Voice plus Data (V+D);
Part 10: Supplementary services stage 1;
Sub-part 18: Barring of Outgoing Calls (BOC)**



Reference

REN/TETRA-03001-10-18

Keywords

call barring, data, radio, speech, stage 1,
supplementary service, TETRA

ETSI

650 Route des Lucioles
F-06921 Sophia Antipolis Cedex - FRANCE

Tel.: +33 4 92 94 42 00 Fax: +33 4 93 65 47 16

Siret N° 348 623 562 00017 - NAF 742 C
Association à but non lucratif enregistrée à la
Sous-Préfecture de Grasse (06) N° 7803/88

Important notice

Individual copies of the present document can be downloaded from:

<http://www.etsi.org>

The present document may be made available in more than one electronic version or in print. In any case of existing or perceived difference in contents between such versions, the reference version is the Portable Document Format (PDF). In case of dispute, the reference shall be the printing on ETSI printers of the PDF version kept on a specific network drive within ETSI Secretariat.

Users of the present document should be aware that the document may be subject to revision or change of status. Information on the current status of this and other ETSI documents is available at

<http://portal.etsi.org/tb/status/status.asp>

If you find errors in the present document, send your comment to:

editor@etsi.fr

Copyright Notification

No part may be reproduced except as authorized by written permission.
The copyright and the foregoing restriction extend to reproduction in all media.

© European Telecommunications Standards Institute 2002.
All rights reserved.

DECT™, **PLUGTESTS™** and **UMTS™** are Trade Marks of ETSI registered for the benefit of its Members.
TIPHON™ and the **TIPHON logo** are Trade Marks currently being registered by ETSI for the benefit of its Members.
3GPP™ is a Trade Mark of ETSI registered for the benefit of its Members and of the 3GPP Organizational Partners.

Contents

Intellectual Property Rights	5
Foreword.....	5
1 Scope	7
2 References	7
3 Definitions and abbreviations.....	7
3.1 Definitions	7
3.2 Abbreviations	8
4 SS-BOC stage 1 specification	8
4.1 Description	8
4.1.1 General description	8
4.1.2 Qualifications on applicability to telecommunication services.....	9
4.2 Procedures	9
4.2.1 Provision/Withdrawal	9
4.2.2 Normal procedures.....	9
4.2.2.1 Activation, deactivation, definition, registration, interrogation and cancellation.....	9
4.2.2.1.1 Activation/Deactivation.....	9
4.2.2.1.2 Definition.....	9
4.2.2.1.3 Registration	9
4.2.2.1.4 Interrogation	9
4.2.2.1.5 Cancellation.....	9
4.2.2.2 Invocation and operation.....	9
4.2.3 Exceptional procedures.....	10
4.2.3.1 Activation, deactivation, definition, registration, interrogation and cancellation.....	10
4.2.3.1.1 Activation/Deactivation.....	10
4.2.3.1.2 Definition.....	10
4.2.3.1.3 Registration	10
4.2.3.1.4 Interrogation	10
4.2.3.1.5 Cancellation.....	10
4.2.3.2 Invocation and operation.....	10
4.3 Interactions with other supplementary services.....	11
4.3.1 Calling Line Identification Presentation (CLIR).....	11
4.3.2 Connected Line Identification Presentation (CLIP).....	11
4.3.3 Calling/Connected Line Identification Restriction (COLP).....	11
4.3.4 Call Report (CR).....	11
4.3.5 Talking Party Identification (TPI)	11
4.3.6 Call Forwarding Unconditional (CFU).....	11
4.3.7 Call Forwarding on Busy (CFB).....	11
4.3.8 Call Forwarding on No Reply (CFNRy).....	11
4.3.9 Call Forwarding On Not Reachable (CFNR).....	11
4.3.10 List Search Call (LSC).....	11
4.3.11 Call Authorized By Dispatcher (CAD).....	11
4.3.12 Short Number Addressing (SNA).....	11
4.3.13 Area Selection (AS).....	12
4.3.14 Access Priority (AP)	12
4.3.15 Priority Call (PC).....	12
4.3.16 Call Waiting (CW).....	12
4.3.17 Call Hold (HOLD).....	12
4.3.18 Call Completion to Busy Subscriber (CCBS).....	12
4.3.19 Late Entry (LE).....	12
4.3.20 Void	12
4.3.21 Pre-emptive Priority Call (PPC)	12
4.3.22 Include Call (IC).....	12
4.3.23 Void	12
4.3.24 Barring of Outgoing Calls (BOC).....	12

4.3.25	Barring of Incoming Calls (BIC)	12
4.3.26	Discreet Listening (DL)	12
4.3.27	Ambience Listening (AL)	13
4.3.28	Dynamic Group Number Assignment (DGNA)	13
4.3.29	Call completion on No Reply (CCNR)	13
4.3.30	Call Retention (CRT) Priority	13
4.4	Interworking considerations	13
4.5	Overall SDL	13
Annex A (informative): Bibliography		15
History		16

Intellectual Property Rights

IPRs essential or potentially essential to the present document may have been declared to ETSI. The information pertaining to these essential IPRs, if any, is publicly available for **ETSI members and non-members**, and can be found in ETSI SR 000 314: *"Intellectual Property Rights (IPRs); Essential, or potentially Essential, IPRs notified to ETSI in respect of ETSI standards"*, which is available from the ETSI Secretariat. Latest updates are available on the ETSI Web server (<http://webapp.etsi.org/IPR/home.asp>).

Pursuant to the ETSI IPR Policy, no investigation, including IPR searches, has been carried out by ETSI. No guarantee can be given as to the existence of other IPRs not referenced in ETSI SR 000 314 (or the updates on the ETSI Web server) which are, or may be, or may become, essential to the present document.

Foreword

This European Standard (Telecommunications series) has been produced by ETSI Project Terrestrial Trunked Radio (TETRA).

The present document is part 10, sub-part 18 of a multi-part deliverable covering Voice plus Data (V+D), as identified below:

- EN 300 392-1: "General network design";
- EN 300 392-2: "Air Interface (AI)";
- EN 300 392-3: "Interworking at the Inter-System Interface (ISI)";
- ETS 300 392-4: "Gateways basic operation";
- EN 300 392-5: "Peripheral Equipment Interface (PEI)";
- EN 300 392-7: "Security";
- EN 300 392-9: "General requirements for supplementary services";
- EN 300 392-10: "Supplementary services stage 1";**
 - Sub-part 1: "Call identification";
 - Sub-part 2: "Call report";
 - Sub-part 3: "Talking Party Identification (TPI)";
 - Sub-part 4: "Call Forwarding (CF)";
 - Sub-part 5: "List Search Call (LSC)";
 - Sub-part 6: "Call Authorized by Dispatcher (CAD)";
 - Sub-part 7: "Short number addressing";
 - Sub-part 8: "Area selection";
 - Sub-part 9: "Access priority";
 - Sub-part 10: "Priority Call (PC)";
 - Sub-part 11: "Call Waiting (CW)";
 - Sub-part 12: "Call Hold (CH)";
 - Sub-part 13: "Call completion to busy subscriber";
 - Sub-part 14: "Late Entry (LE)";

Sub-part 15: "Transfer of control";

Sub-part 16: "Pre-emptive priority call";

Sub-part 17: "Include Call (IC)";

Sub-part 18: "Barring of Outgoing Calls (BOC)";

Sub-part 19: "Barring of Incoming Calls (BIC)";

Sub-part 20: "Discreet Listening (DL)";

Sub-part 21: "Ambience Listening (AL)";

Sub-part 22: "Dynamic Group Number Assignment (DGNA)";

Sub-part 23: "Call completion on no reply";

Sub-part 24: "Call Retention (CRT)";

EN 300 392-11: "Supplementary services stage 2";

EN 300 392-12: "Supplementary services stage 3";

ETS 300 392-13: "SDL model of the Air Interface (AI)";

ETS 300 392-14: "Protocol Implementation Conformance Statement (PICS) proforma specification";

TS 100 392-15: "TETRA frequency bands, duplex spacings and channel numbering";

TS 100 392-16: "Network Performance Metrics";

TS 100 392-17: "TETRA V+D and DMO Release 1.1 specifications".

National transposition dates	
Date of adoption of this EN:	13 September 2002
Date of latest announcement of this EN (doa):	31 December 2002
Date of latest publication of new National Standard or endorsement of this EN (dop/e):	30 June 2003
Date of withdrawal of any conflicting National Standard (dow):	30 June 2003

1 Scope

The present document defines the stage 1 specification of the Barring of Outgoing Call (BOC) supplementary service for the Trans-European Trunked Radio (TETRA). Stage 1 is an overall service description from the users point of view but does not deal with the details of the human interface itself.

The present document specifies the service description of the supplementary service and the procedures to be expected with successful and unsuccessful outcomes. In addition present document specifies the interactions with other TETRA supplementary services and interworking considerations.

Charging principles are outside the scope of the present document.

The Barring of Outgoing Call (BOC) supplementary service enables barring restriction for outgoing calls to be set.

2 References

The following documents contain provisions which, through reference in this text, constitute provisions of the present document.

- References are either specific (identified by date of publication and/or edition number or version number) or non-specific.
- For a specific reference, subsequent revisions do not apply.
- For a non-specific reference, the latest version applies.

[1] ITU-T Recommendation Z.100: "Specification and description language (SDL)".

[2] ETSI ETS 300 392-10-4: "Terrestrial Trunked Radio (TETRA); Voice plus Data (V+D); Part 10: Supplementary services stage 1; Sub-part 4: Call Forwarding (CF)".

3 Definitions and abbreviations

3.1 Definitions

For the purposes of the present document, the following definitions apply:

affected user: user whose outgoing service or services are barred

authorized user: user who is permitted to bar outgoing calls of defined users

bearer service: type of telecommunication service that provides the capability for the transmission of signals between user-network interfaces

Switching and Management Infrastructure (SwMI): all of the TETRA equipment for a Voice plus Data (V+D) network except for subscriber terminals

NOTE: The SwMI enables subscriber terminals to communicate with each other via the SwMI.

teleservice: type of telecommunications service that provides the complete capability, including terminal equipment functions, for communication between users according to agreed protocols

3.2 Abbreviations

For the purposes of the present document, the following abbreviations apply:

AL	Ambience Listening
AP	Access Priority
AS	Area Selection
BIC	Barring of Incoming Calls
BOC	Barring of Outgoing Calls
CAD	Call Authorized by Dispatcher
CCBS	Call Completion to Busy Subscriber
CCNR	Call Completion on No Reply
CFB	Call Forwarding on Busy
CFNRc	Call Forwarding on Not Reachable
CFNRy	Call Forwarding on No Reply
CFU	Call Forwarding Unconditional
CLIP	Calling Line Identification Presentation
CLIR	Calling/Connected Line Identification Restriction
COLP	COnnected Line identification Presentation
CR	Call Report
CRT	Call ReTention
CW	Call Waiting
DGNA	Dynamic Group Number Assignment
DL	Discreet Listening
GTSI	Group TETRA Subscriber Identity
HOLD	Call HOLD
IC	Include Call
ISDN	Integrated Services Digital Network
ITSI	Individual TETRA Subscriber Identity
LE	Late Entry
LSC	List Search Call
PC	Priority Call
PPC	Pre-emptive Priority Call
SDL	(functional) Specification and Description Language
SDS	Short Data Service
SNA	Short Number Addressing
SS	Supplementary Service
NOTE:	The abbreviation SS is only used when referring to a specific supplementary service.
SwMI	Switching and Management Infrastructure
TETRA	Trans-European Trunked RAdio
TPI	Talking Party Identification

4 SS-BOC stage 1 specification

4.1 Description

4.1.1 General description

Barring of Outgoing Calls (BOC) is the facility whereby certain outgoing calls shall be barred. The barring can be set up and altered by the service provider. The authorized user may set and remove barring of the affected users.

The barring of outgoing calls is defined as ranges of barred numbers. Barring can be excluded for closed user groups and individual numbers inside the barred ranges of numbers as exceptions.

These ranges and exceptions may be applied independently to each service: circuit mode speech service, circuit mode data service and Short Data Service (SDS).

The service provider may define certain numbers such as "emergency numbers" to remain outside of barring although they are within barred ranges of numbers.

4.1.2 Qualifications on applicability to telecommunication services

Barring of outgoing call may be applicable independently to all TETRA teleservices, bearer services and short data services.

4.2 Procedures

4.2.1 Provision/Withdrawal

This service shall be provided by prior arrangement to affected users by the service provider.

The provision of the service shall be on a per TETRA Individual TETRA Subscriber Identity (ITSI)/Group TETRA Subscriber Identity (GTSI) basis. The authorized user(s) and served users shall be defined upon provision.

The service provider may withdraw this service at any time without a prior announcement.

4.2.2 Normal procedures

4.2.2.1 Activation, deactivation, definition, registration, interrogation and cancellation

4.2.2.1.1 Activation/Deactivation

The authorized user may activate or deactivate the supplementary service by definition process. This service may be permanently activated upon provision and deactivated upon withdrawal.

4.2.2.1.2 Definition

The authorized user may be able to set and remove barring for those affected users defined upon provision.

4.2.2.1.3 Registration

The authorized users shall be registered upon provision.

4.2.2.1.4 Interrogation

The Switching and Management Infrastructure (SwMI) may support interrogation for authorised users on the same affected users as the authorised user is allowed to use definition of barring. If interrogation is provided, SwMI shall support interrogation per affected user number.

4.2.2.1.5 Cancellation

Shall not be applicable.

4.2.2.2 Invocation and operation

This service shall be invoked by the TETRA system when the served user attempts to set up a call to a barred number. The served user shall receive an indication of barring and the call shall be rejected.

NOTE: The ability of the served user to receive calls is not affected by SS-BOC and he may receive call from numbers he is not allowed to call.

4.2.3 Exceptional procedures

4.2.3.1 Activation, deactivation, definition, registration, interrogation and cancellation

4.2.3.1.1 Activation/Deactivation

Activation and deactivation is performed upon definition and there no additional exceptional procedures for activation nor deactivation.

4.2.3.1.2 Definition

If the infrastructure cannot accept a definition request then the cause shall be returned to the requesting user.

Possible causes may be:

- request failed for any reason;
- accepted, but definition values changed by SwMI;
- user not authorized;
- unknown TETRA identity;
- parameters not valid; or
- insufficient information.

4.2.3.1.3 Registration

Shall not be applicable.

4.2.3.1.4 Interrogation

If the SwMI cannot accept an interrogation request, the interrogating user shall receive a notification that a BOC interrogation was unsuccessful. Possible causes for rejection may be:

- request failed for any reason;
- accepted, but definition values changed by SwMI;
- user not authorized;
- unknown TETRA identity;
- parameters not valid; or
- insufficient information.

4.2.3.1.5 Cancellation

Shall not be applicable.

4.2.3.2 Invocation and operation

If the infrastructure cannot invoke the service, and no cause shall be returned to the calling nor served user.

4.3 Interactions with other supplementary services

4.3.1 Calling Line Identification Presentation (CLIR)

Not applicable as the call set-up is barred.

4.3.2 Connected Line Identification Presentation (CLIP)

Barring of outgoing calls shall not have any interaction with SS-CLIP.

4.3.3 Calling/Connected Line Identification Restriction (COLP)

Barring of outgoing calls shall not have any interaction with SS-COLP.

4.3.4 Call Report (CR)

Barring of outgoing calls shall not have any interaction with SS-CR. A user cannot invoke CR on a call which is barred.

4.3.5 Talking Party Identification (TPI)

Barring of outgoing calls shall not have any interaction with SS-TPI.

4.3.6 Call Forwarding Unconditional (CFU)

SS-BOC takes precedence to SS-CFU and both SS-BOC and SS-CFU cannot be activated at the same time to the same user, refer to ETS 300 392-10-4 [2].

4.3.7 Call Forwarding on Busy (CFB)

SS-BIC takes precedence to SS-CFU and both SS-BIC and SS-CFU cannot be activated at the same time to the same user, refer to ETS 300 392-10-4 [2].

4.3.8 Call Forwarding on No Reply (CFNRy)

SS-BIC takes precedence to SS-CFU and both SS-BIC and SS-CFU cannot be activated at the same time to the same user, refer to ETS 300 392-10-4 [2].

4.3.9 Call Forwarding On Not Reachable (CFNR)

SS-BIC takes precedence to SS-CFU and both SS-BIC and SS-CFU cannot be activated at the same time to the same user, refer to ETS 300 392-10-4 [2].

4.3.10 List Search Call (LSC)

Barring of outgoing calls shall not have any interaction with SS-LSC. Barring of (attendants) of the search list shall not be checked. The list itself may be a barred address.

4.3.11 Call Authorized By Dispatcher (CAD)

Barring of outgoing calls shall not have any interaction with SS-CAD. If both CAD and BOC are activated on the required service then the CAD shall take precedence. The dispatcher number may be a barred number.

4.3.12 Short Number Addressing (SNA)

Barring of outgoing calls shall not have any interaction with SS-SNA. SS-SNA-2 may override SS-BOC.

4.3.13 Area Selection (AS)

BOC shall take precedence over SS-AS.

4.3.14 Access Priority (AP)

Barring of outgoing calls shall not have any interaction with SS-AP.

4.3.15 Priority Call (PC)

Barring of outgoing calls shall not have any interaction with SS-PC. The priority calls may be also barred.

4.3.16 Call Waiting (CW)

Barring of outgoing calls shall not have any interaction with SS-CW.

4.3.17 Call Hold (HOLD)

Barring of outgoing calls shall not have any interaction with SS-HOLD. The affected user's call to a barred address shall not proceed.

4.3.18 Call Completion to Busy Subscriber (CCBS)

Barring of outgoing calls shall not have any interaction with SS-CCBS. The barred call never proceeds to a state where call completion could be invoked.

4.3.19 Late Entry (LE)

Not applicable.

4.3.20 Void

4.3.21 Pre-emptive Priority Call (PPC)

Barring of outgoing calls shall not have any interaction with SS-PPC. Pre-emptive priority calls may also be barred.

4.3.22 Include Call (IC)

Barring of outgoing calls shall not have any interaction with SS-IC. The affected user's inclusion of a barred destination shall not proceed.

4.3.23 Void

4.3.24 Barring of Outgoing Calls (BOC)

Not applicable.

4.3.25 Barring of Incoming Calls (BIC)

Barring of outgoing calls shall not have any interaction with barring of incoming calls.

4.3.26 Discreet Listening (DL)

Barring of outgoing calls shall not have any interaction with SS-DL. DL cannot proceed to a barred address.

4.3.27 Ambience Listening (AL)

Barring of outgoing calls shall not have any interaction with SS-AL. AL cannot proceed to a barred address.

4.3.28 Dynamic Group Number Assignment (DGNA)

Barring of outgoing calls shall not have any interaction with SS-DGNA.

4.3.29 Call completion on No Reply (CCNR)

Barring of outgoing calls shall not have any interaction with SS-CCNR. The barred call never proceeds to a state where call completion could be invoked.

4.3.30 Call Retention (CRT) Priority

Barring of outgoing calls shall not have any interaction with SS-CRT priority. The barred call never proceeds to a state where call retention would operate.

4.4 Interworking considerations

The barring of outgoing calls may be available upon service provider agreement across the intersystem interface.

4.5 Overall SDL

Figure 1 contains the dynamic description of SS-BOC using the specification and description Language (SDL) defined in ITU-T Recommendation Z.100 [1]. The SDL process represents the behaviour of the network in providing SS-BOC.

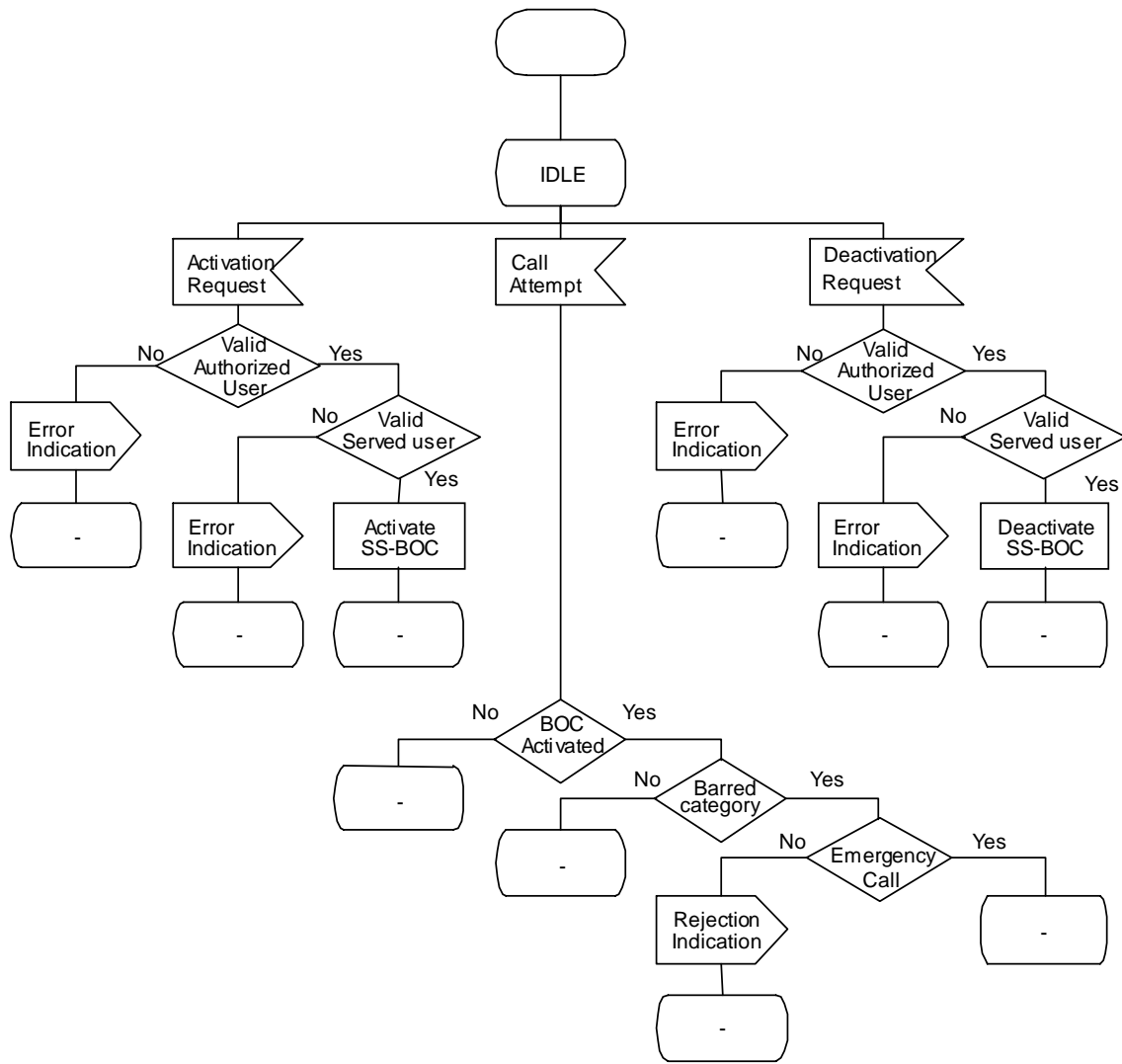


Figure 1: BB-BOC overview SDL

Annex A (informative): Bibliography

ITU-T Recommendation I.130: "Method for the characterization of telecommunication services supported by an ISDN and network capabilities of an ISDN".

History

Document history		
Edition 1	April 1996	Publication as ETS 300 392-10-18
V1.2.0	May 2002	One-step Approval Procedure OAP 20020913: 2002-05-15 to 2002-09-13
V1.2.1	September 2002	Publication